

Cornwall Occupancy Rates 1993 to 2009

Prepared for Visit Cornwall
by
The South West Research Company

February 2010



Cornwall Occupancy Rates

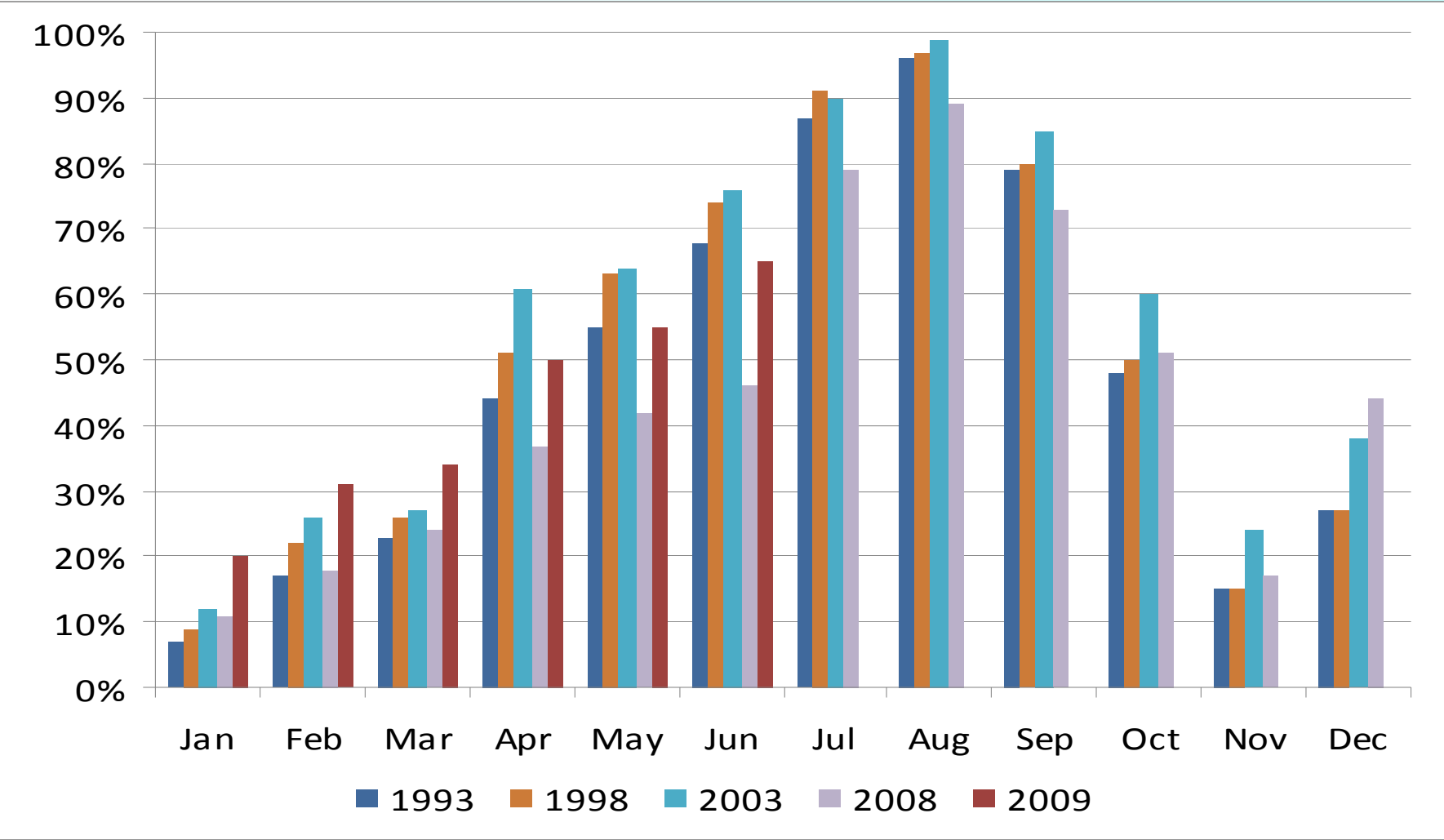
The following pages contain details of the proportion of Cornwall's accommodation stocks, both serviced and non-serviced, that were occupied from 1993 to 2009 by month.

Non-serviced accommodation data is sourced from the South West Tourism Non-Serviced Accommodation Occupancy Survey throughout.

Serviced accommodation data is sourced from the South West Tourism Serviced Accommodation Occupancy Survey until 2007 and from then onwards the data is sourced from the national survey conducted by BDRC. Although methodologies remain largely unchanged, the survey from 2008 onwards switched entirely to online data collection.



Cornwall non-serviced accommodation unit occupancy rates 1993 – 2009 (latest available data)

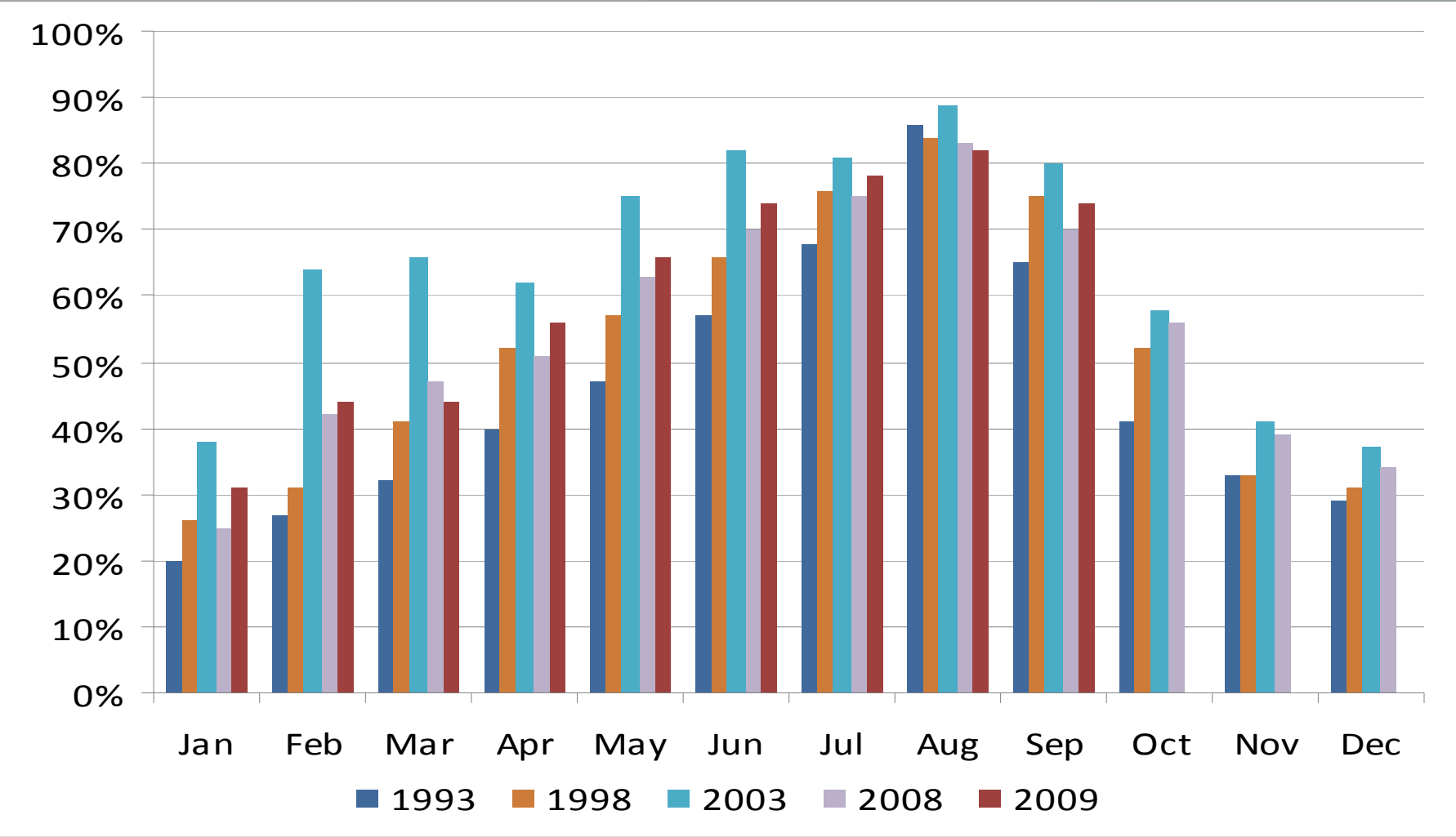


Cornwall non-serviced accommodation unit occupancy rates data table 1993 – 2009 (latest available data)

	Jan	Feb	Mar	Apr	May	Jun	Jul	Aug	Sep	Oct	Nov	Dec
1993	7%	17%	23%	44%	55%	68%	87%	96%	79%	48%	15%	27%
1994	20%	25%	37%	61%	71%	78%	84%	97%	74%	41%	11%	25%
1995	9%	19%	22%	47%	62%	83%	90%	99%	76%	49%	21%	28%
1996	12%	20%	30%	44%	62%	84%	95%	97%	78%	57%	18%	34%
1997	11%	24%	39%	36%	56%	85%	94%	97%	77%	57%	18%	33%
1998	9%	22%	26%	51%	63%	74%	91%	97%	80%	50%	15%	27%
1999	12%	23%	30%	45%	62%	70%	85%	97%	80%	53%	20%	29%
2000	16%	23%	22%	53%	65%	71%	87%	99%	76%	54%	21%	30%
2001	9%	26%	23%	49%	61%	73%	89%	98%	83%	66%	27%	37%
2002	13%	31%	45%	41%	61%	86%	91%	95%	81%	66%	21%	38%
2003	12%	26%	27%	61%	64%	76%	90%	99%	85%	60%	24%	38%
2004	13%	26%	27%	52%	62%	72%	91%	95%	80%	51%	20%	32%
2005	18%	26%	39%	46%	67%	71%	82%	97%	80%	53%	22%	31%
2006	13%	29%	29%	51%	61%	69%	86%	99%	74%	55%	20%	33%
2007	15%	22%	26%	43%	55%	63%	91%	94%	87%	54%	39%	34%
2008	11%	18%	24%	37%	42%	46%	79%	89%	73%	51%	17%	44%
2009	20%	31%	34%	50%	55%	65%						



Cornwall serviced accommodation room occupancy rates 1993 – 2009 (latest available data)



Cornwall serviced accommodation room occupancy rates data table 1993 – 2009 (latest available data)

	Jan	Feb	Mar	Apr	May	Jun	Jul	Aug	Sep	Oct	Nov	Dec
1993	20%	27%	32%	40%	47%	57%	68%	86%	65%	41%	33%	29%
1994	19%	27%	37%	45%	52%	59%	68%	79%	65%	48%	25%	25%
1995	17%	26%	36%	47%	53%	67%	74%	86%	70%	49%	32%	27%
1996	22%	32%	39%	44%	57%	68%	77%	89%	72%	52%	38%	27%
1997	24%	36%	48%	44%	61%	71%	77%	87%	74%	52%	36%	33%
1998	26%	31%	41%	52%	57%	66%	76%	84%	75%	52%	33%	31%
1999	30%	35%	41%	50%	59%	65%	71%	84%	72%	54%	44%	30%
2000	29%	34%	41%	52%	62%	67%	74%	82%	67%	49%	32%	30%
2001	27%	27%	32%	49%	63%	70%	79%	87%	80%	60%	43%	38%
2002	34%	46%	50%	55%	69%	79%	83%	90%	83%	61%	43%	36%
2003	38%	64%	66%	62%	75%	82%	81%	89%	80%	58%	41%	37%
2004	31%	40%	41%	56%	63%	75%	79%	82%	73%	55%	39%	35%
2005	34%	43%	47%	55%	65%	73%	75%	80%	75%	60%	49%	39%
2006	31%	37%	42%	56%	62%	72%	77%	85%	77%	57%	39%	37%
2007	33%	43%	48%	56%	65%	74%	78%	83%	75%	60%	36%	33%
2008	25%	42%	47%	51%	63%	70%	75%	83%	70%	56%	39%	34%
2009	31%	44%	44%	56%	66%	74%	78%	82%	84%			

